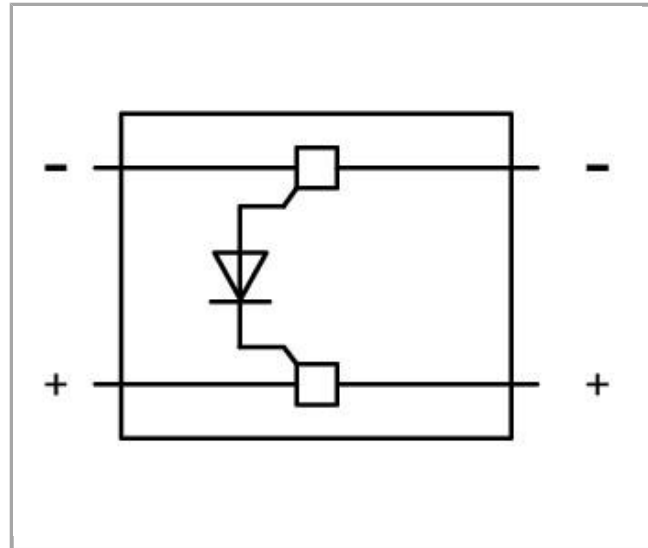


280-803/281-411



RoHS Compliant

[BOMcheck.net](https://www.bomcheck.net)

Color:

Data

Electrical data

Nominal voltage	250 V
Reverse voltage	1000 V

Ratings per IEC/EN 60664-1

Rated current	0.5 A
---------------	-------

Connection data

Actuation type	Operating tool
----------------	----------------

Geometrical Data

Width	10 mm / 0.394 inch
-------	--------------------

Material Data







Color	gray
Insulating material	Polyamide 66 (PA 66)
Fire load	0.087 MJ
Weight	4.2 g

Commercial data

Product Group	1 (Rail Mounted Terminal Blocks)
Country of origin	DE
GTIN	4045454195977
Customs Tariff No.	85369010000

Compatible products

clamps

	Item no.: 280-101 2-conductor through terminal block; 2.5 mm ² ; lateral marker slots; for DIN-rail 35 x 15 and 35 x 7.5; CAGE CLAMP®	280-101
	Item no.: 280-601 2-conductor through terminal block; 2.5 mm ² ; lateral marker slots; for DIN-rail 35 x 15 and 35 x 7.5; CAGE CLAMP®	280-601
	Item no.: 280-603 4-conductor through terminal block; 2.5 mm ² ; center marking; for DIN-rail 35 x 15 and 35 x 7.5; CAGE CLAMP®	280-603
	Item no.: 280-621 4-conductor through terminal block; 2.5 mm ² ; lateral marker slots; for DIN-rail 35 x 15 and 35 x 7.5; CAGE CLAMP®	280-621
	Item no.: 280-633 4-conductor through terminal block; 2.5 mm ² ; center marking; for DIN-rail 35 x 15 and 35 x 7.5; CAGE CLAMP®	280-633
	Item no.: 280-681 3-conductor through terminal block; 2.5 mm ² ; center marking; for DIN-rail 35 x 15 and 35 x 7.5; CAGE CLAMP®	280-681



Item no.: 280-833

4-conductor through terminal block; 2.5 mm²; center marking; for DIN-rail 35 x 15 and 35 x 7.5; CAGE CLAMP®

280-833



Item no.: 280-901

2-conductor through terminal block; 2.5 mm²; center marking; for DIN-rail 35 x 15 and 35 x 7.5; CAGE CLAMP®

280-901

Downloads

Documentation

Bid Text

280-803/281-411

doc
23.6 kB

Download

CAD/CAE - Smart Data

CAD data

3D Download 280-803/281-411

URL

Download

Subject to changes.